



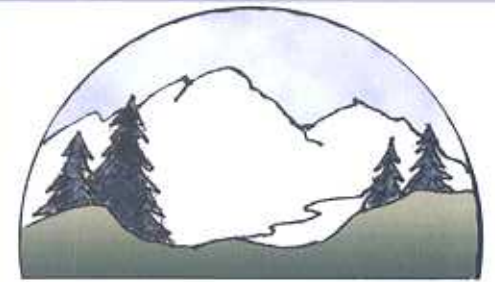
The Belknap Range Conservation Coalition is a non-profit organization with participating members from: Alton, Belmont, Gilford, Gilmanton; UNH Cooperative Extension: Society for Protection of NH Forests; Lakes Region Conservation Trust; Belknap County Sportsman's Assoc.; Gilmanton Land Trust; Belknap County Conservation District.

Dave Roberts & other dedicated individuals



**Belknap Range
Conservation Coalition**

**Belknap Range Conservation Coalition
PO Box 151
Gilmanton IW, NH 03837**



**Belknap Range
Conservation Coalition**

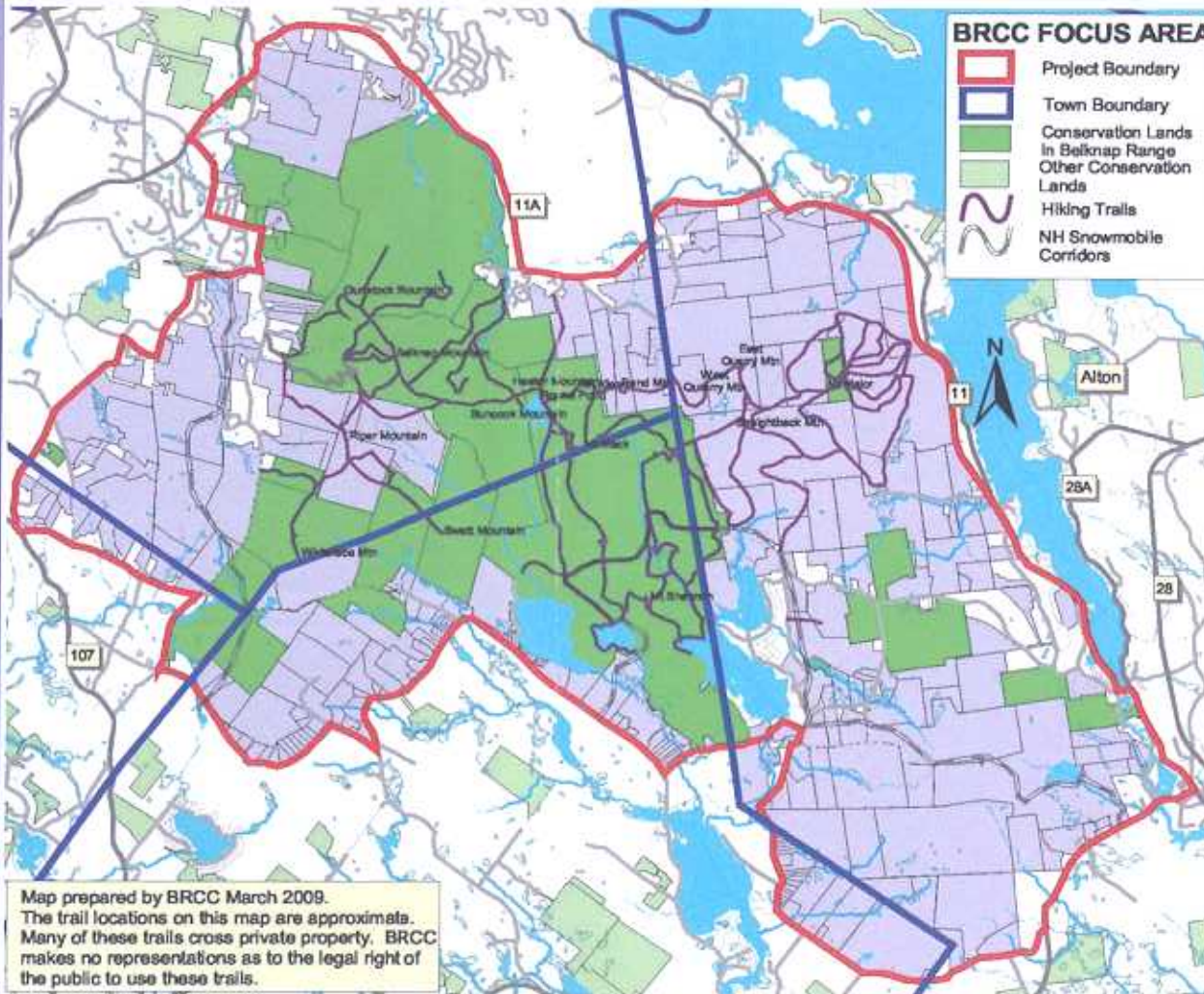
*Promoting the
conservation of open space,
responsible stewardship, and
low impact public enjoyment
of the scenic, natural,
recreational
and
historical resources of the
Belknap Mountain Range*





The Belknap Mountain Range Includes An Exemplary Diversity of Features & Opportunities

- Lands within Towns of Alton, Belmont, Gilford & Gilmanton
- 31,665 Acres of Forests, Lakes, Streams, Trails, Cellar Holes, Waterfalls, Scenic Vistas & Important Wildlife Habitats
- Trails for Hiking, Biking, Horse-Back Riding & Snowmobiling
- Hunting, Fishing, Bird-Watching, Swimming & Scouting



The BRCC Goals

- Focus efforts on the protection of the large unfragmented block of land that encompasses the Belknap Mountain Range;
- Facilitate cooperation and communication among conservation organizations, municipalities, other governmental entities and area landowners;
- Help coalition members secure funding, technical assistance and other resources for carrying out programs in support of this mission;
- Educate the public, landowners and local decision makers about the significance of the resources of the Belknap Mountain Range;
- Develop, promote and implement methods and strategies for ensuring the long-term protection and responsible stewardship of these resources;
- Promote opportunities for low impact public enjoyment and recreation.

For More Information Contact:
Belknap Range Conservation Coalition
 PO Box 151, Gilmanton IW, NH 03837
 BelknapRangeCC@aol.com